



SAN DIEGO STATE  
UNIVERSITY

# Student Diversity Report

*Presented to the: Diversity, Equity and Outreach (DEO) Committee*

*April 26, 2016*

# Table of Contents

FTF Academic Indicators by Students of Color	Page 1
FTF Enrollment by Resident Status/Admission Area/Ethnicity	Page 2
Chart: FTF Enrollment by Ethnicity – Students of Color	Page 3
Chart: FTF Enrollment by Pell-Eligibility Status	Page 4
New Undergraduate Transfer and Readmits Enrollment by Resident Status/Admission Area/Ethnicity	Page 5
Chart: New Undergraduate Transfers and Readmits Enrollment by Admission Area	Page 6
Chart: New Undergraduate Transfer and Readmit Enrollment by Pell-Eligibility Status	Page 7
Chart: New Transfer and Readmits Percent of Enrollment by Ethnicity – Students of Color	Page 8
FTF Freshmen One-Year Continuation Rates by Ethnicity	Page 9
FTF Average GPA after Year One: Fall 1999 – Fall 2014 by Admission Area/Gender/Resident Status & Ethnicity – Students of Color	Page 10
FTF Continued or Graduated after Years 1-6 by Ethnicity – Students of Color	Page 11
FTF FULL-TIME Graduation Rates by Ethnicity	Page 12-13
Chart: FTF FULL-TIME Four-Yr. Graduation Rates by Ethnicity – Students of Color	Page 14
Chart: FTF FULL-TIME Six-Yr. Graduation Rates by Ethnicity – Students of Color	Page 15
FTF FULL-TIME Six-Yr. Graduation Rates by Ethnicity	Page 16
FTF FULL- TIME Six-Yr. Graduation Rates by Eligibility Index Range/Admission Area: F1999 & F2009 Cohorts	Page 17
FTF FULL- TIME Six-Yr. Graduation Rates by Eligibility Index Range/Ethnicity Students of Color: Fall 1999 & Fall 2009 Cohorts	Page 18
New Undergraduate & Readmits: One-Yr. Continuation Rates by Ethnicity	Page 19
New Upper Division FULL-TIME Transfers Graduation Rates by Ethnicity	Page 20-21
Chart: New Upper Division FULL-TIME Transfer Four-Yr. Graduation Rates by Pell-Eligible Status	Page 22
Chart: New Upper Division FULL-TIME Transfer Four-Yr. Graduation Rates by Ethnicity – Students of Color	Page 23



**First-time Freshmen: Academic Indicators by Students of Color**  
**Average High School GPA, Average Test Scores & Average Eligibility Index**  
*San Diego Campus*

TERM: Fall 2015			
Values	Students of Color	Other	Total
Enroll	2,722	2,420	5,142
Avg HS GPA	3.70	3.69	3.69
Avg SAT Math	558	587	570
Avg SAT Verbal	536	565	548
Avg SAT	1,094	1,152	1,118
Avg ACT	23.9	26.0	25.0
Avg EI	4076	4150	4110

**First-time Freshmen Enrollment**  
**By Resident Status, Admission Area & Ethnicity**  
*San Diego Campus*

*Fall 2015*

	Resident/Exempt		Resident/ Exempt Enrl	Resident/Exempt % Ethnicity	Interntl (F) Enrl	Out of State (N) Enrl	Out of State (N) % Ethnicity	Total Enrl	Total % Ethnicity
	Local Enrl	Non-Local Area Enrl							
<b>Students of Color</b>									
Native American	2	15	17	0.4 %		2	0.3 %	19	0.4 %
African American	42	155	197	4.7 %		28	4.5 %	225	4.4 %
Hispanic, Latino	659	598	1257	30.0 %		56	8.9 %	1313	25.5 %
Asian	142	241	383	9.1 %		35	5.6 %	418	8.1 %
Pacific Islander, Native H	2	8	10	0.2 %		4	0.6 %	14	0.3 %
Filipino	218	133	351	8.4 %		11	1.8 %	362	7.0 %
Multiple Ethnicities	115	213	328	7.8 %		43	6.9 %	371	7.2 %
<b>Students of Color Total</b>	<b>1,180</b>	<b>1,363</b>	<b>2543</b>	<b>60.6 %</b>		<b>179</b>	<b>28.6 %</b>	<b>2722</b>	<b>52.9 %</b>
<b>All Others</b>									
White	336	1,138	1474	35.1 %		395	63.1 %	1869	36.3 %
Other, Not Stated	34	114	148	3.5 %		47	7.5 %	195	3.8 %
International	27	3	30	0.7 %	321	5	0.8 %	356	6.9 %
<b>All Others Total</b>	<b>397</b>	<b>1,255</b>	<b>1652</b>	<b>39.4 %</b>	<b>321</b>	<b>447</b>	<b>71.4 %</b>	<b>2420</b>	<b>47.1 %</b>
<b>Grand Total</b>	<b>1,577</b>	<b>2,618</b>	<b>4195</b>	<b>100.0 %</b>	<b>321</b>	<b>626</b>	<b>100.0 %</b>	<b>5142</b>	<b>100.0 %</b>

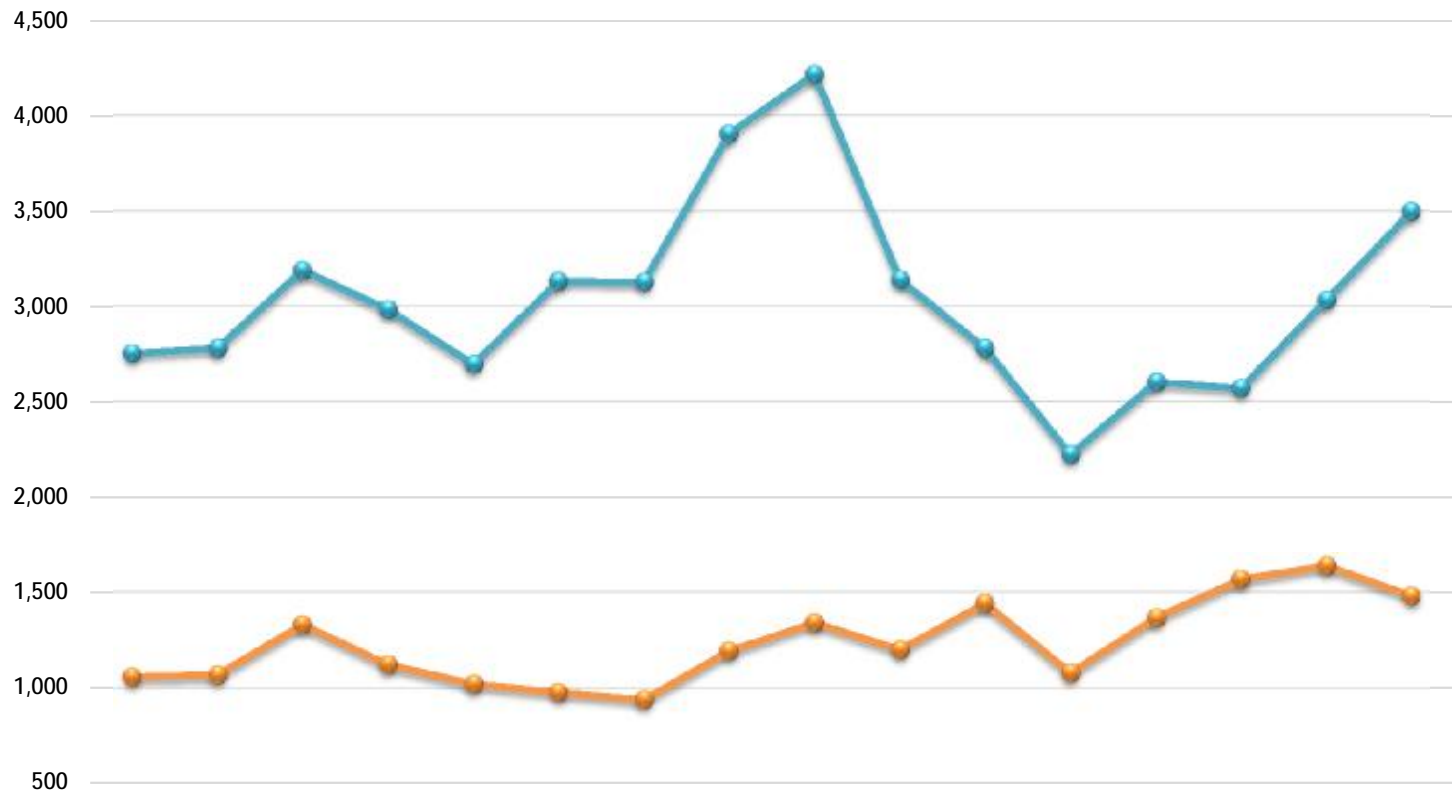
## First-time Freshmen Enrollment By Ethnicity - Students of Color *San Diego Campus*



■ Students of Color  
▲ All Others

	Fall 1999	Fall 2000	Fall 2001	Fall 2002	Fall 2003	Fall 2004	Fall 2005	Fall 2006	Fall 2007	Fall 2008	Fall 2009	Fall 2010	Fall 2011	Fall 2012	Fall 2013	Fall 2014	Fall 2015
Students of Color	1543	1553	1890	1594	1431	1605	1718	2246	2497	2140	2405	1711	2133	2320	2526	2633	2722
All Others	2270	2298	2631	2513	2288	2506	2351	2852	3062	2199	1818	1591	1837	1819	2145	2345	2420

## First-time Freshmen Enrollment by Pell-Eligibility Status *San Diego Campus*



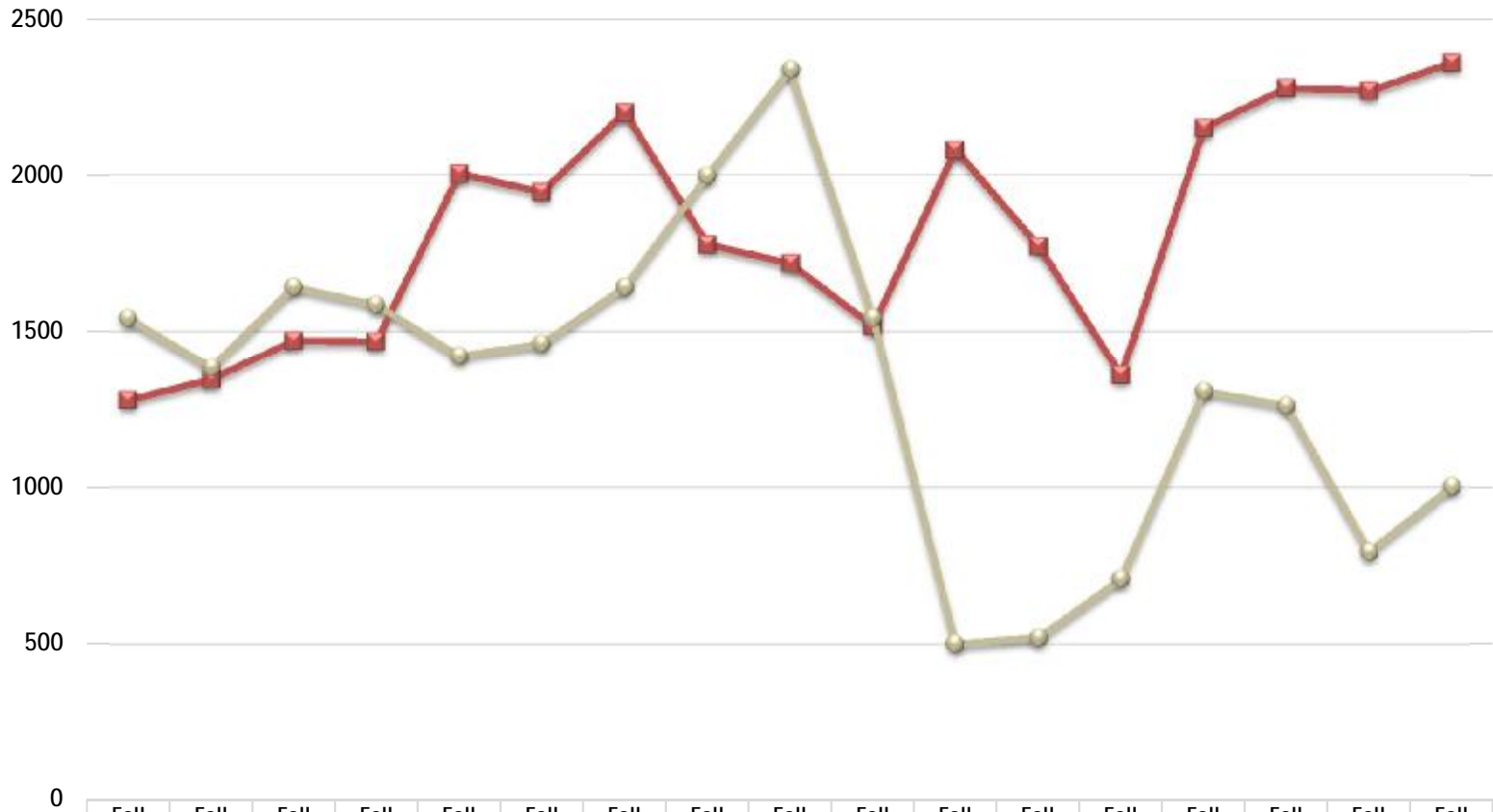
	Fall 1999	Fall 2000	Fall 2001	Fall 2002	Fall 2003	Fall 2004	Fall 2005	Fall 2006	Fall 2007	Fall 2008	Fall 2009	Fall 2010	Fall 2011	Fall 2012	Fall 2013	Fall 2014
<span style="color: orange;">●</span> Pell-Eligible	1,058	1,069	1,331	1,122	1,021	977	940	1,192	1,341	1,199	1,441	1,078	1,366	1,566	1,636	1,478
<span style="color: teal;">●</span> Not Pell-Eligible	2,755	2,782	3,190	2,985	2,698	3,134	3,129	3,906	4,218	3,140	2,782	2,224	2,604	2,573	3,035	3,500

**New Undergraduate Transfers & Readmits Enrollment**  
**By Resident Status, Admission Area & Ethnicity**  
*San Diego Campus*

*Fall 2015*

	Resident/Exempt		Resident/E	Resident/Exempt	Total Enrl	Total % Ethnicity		
	Local	Non-Local	xempt Enrl	% Ethnicity				
	Enrl	Area Enrl						
				Interntl (F) Enrl	Out of State (N) Enrl			
<b>Students of Color</b>								
Native American	6	7	13	0.4 %		13	0.4 %	
African American	103	29	132	4.2 %	4	136	4.0 %	
Hispanic, Latino	928	245	1173	37.2 %	9	1182	35.1 %	
Asian	127	48	175	5.5 %	4	179	5.3 %	
Pacific Islander, Native H:	7		7	0.2 %		7	0.2 %	
Filipino	152	29	181	5.7 %		181	5.4 %	
Multiple Ethnicities	122	59	181	5.7 %	2	183	5.4 %	
<b>Students of Color Total</b>	<b>1,445</b>	<b>417</b>	<b>1862</b>	<b>59.0 %</b>	<b>19</b>	<b>1881</b>	<b>55.9 %</b>	
<b>All Others</b>								
White	646	377	1023	32.4 %		32	1055	31.4 %
Other, Not Stated	164	62	226	7.2 %		13	239	7.1 %
International	36	10	46	1.5 %	138	5	189	5.6 %
<b>All Others Total</b>	<b>846</b>	<b>449</b>	<b>1295</b>	<b>41.0 %</b>	<b>138</b>	<b>50</b>	<b>1483</b>	<b>44.1 %</b>
<b>Grand Total</b>	<b>2,291</b>	<b>866</b>	<b>3157</b>	<b>100.0 %</b>	<b>138</b>	<b>69</b>	<b>3364</b>	<b>100.0 %</b>

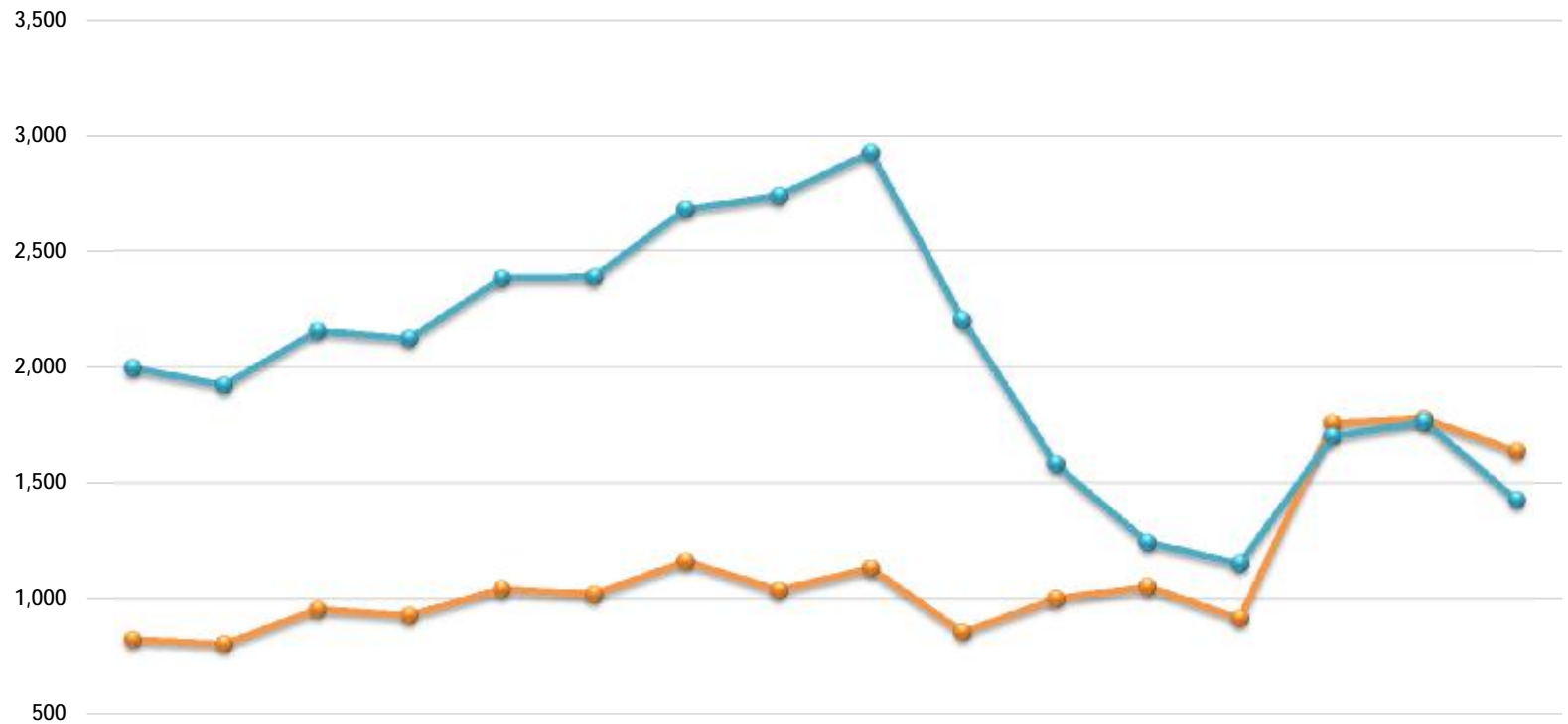
## New UG Transfers & Readmits Enrollment By Admission Area *San Diego Campus*



	Fall 1999	Fall 2000	Fall 2001	Fall 2002	Fall 2003	Fall 2004	Fall 2005	Fall 2006	Fall 2007	Fall 2008	Fall 2009	Fall 2010	Fall 2011	Fall 2012	Fall 2013	Fall 2014	Fall 2015
Local	1279	1345	1472	1469	2006	1947	2202	1779	1719	1518	2082	1774	1360	2152	2281	2271	2360
Non-Local Area	1544	1384	1643	1587	1421	1462	1643	1999	2339	1545	502	521	709	1308	1261	796	1004

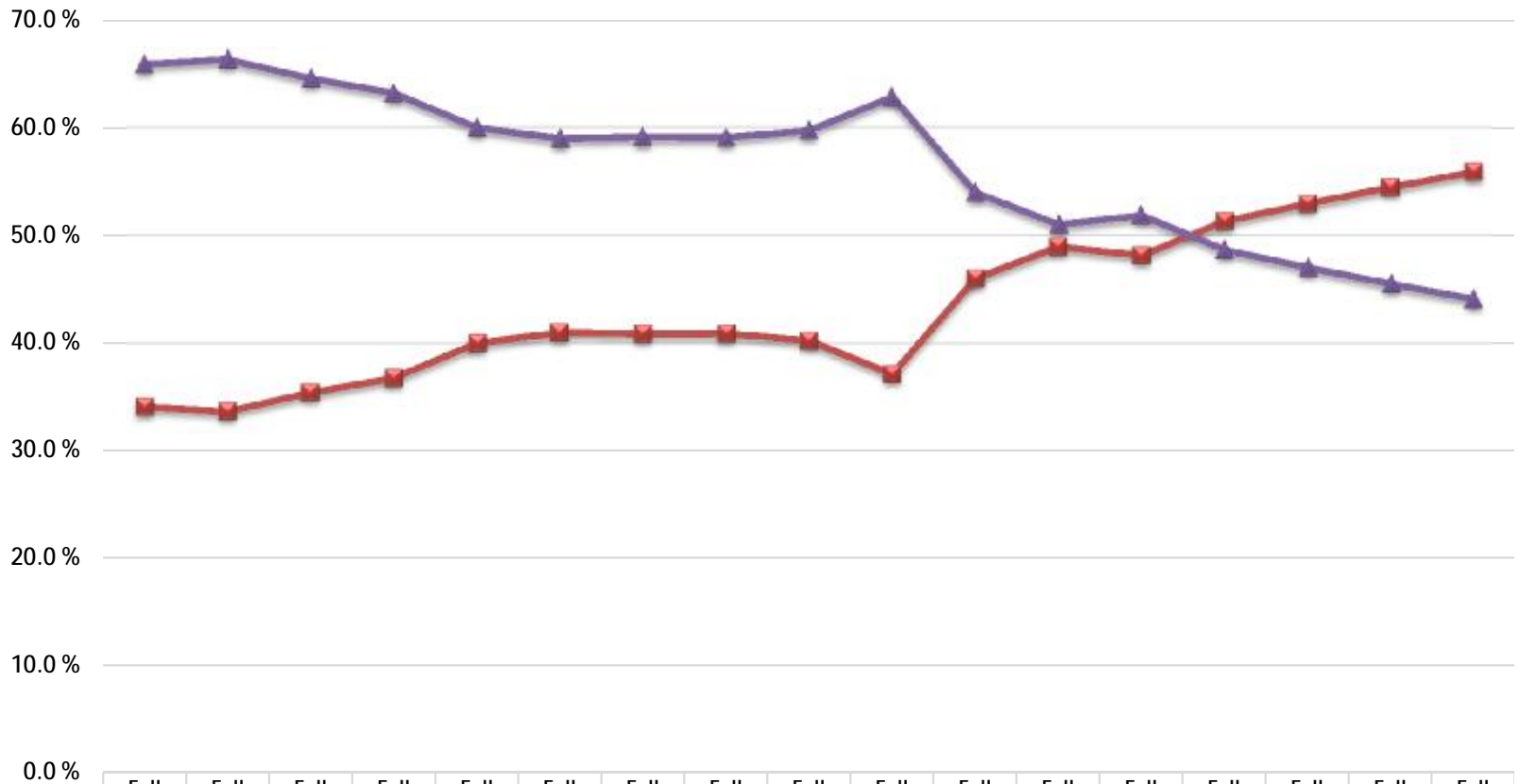


## New UG Transfers & Readmit Enrollment by Pell-Eligibility Status *San Diego Campus*



	Fall 1999	Fall 2000	Fall 2001	Fall 2002	Fall 2003	Fall 2004	Fall 2005	Fall 2006	Fall 2007	Fall 2008	Fall 2009	Fall 2010	Fall 2011	Fall 2012	Fall 2013	Fall 2014
● Pell-Eligible	826	807	957	931	1,043	1,020	1,162	1,037	1,131	859	1,001	1,052	918	1,758	1,777	1,639
● Not Pell-Eligible	1,997	1,922	2,158	2,125	2,384	2,389	2,683	2,741	2,927	2,204	1,583	1,243	1,151	1,702	1,765	1,428

## New Transfers & Readmits Percent of Enrollment By Ethnicity: Students of Color *San Diego Campus*



■ Students of Color  
▲ All Others

## First-time Freshmen One-Year Continuation Rates By Ethnicity *San Diego Campus*

% Cont After Yr 1	Fall 1996	Fall 1997	Fall 1998	Fall 1999	Fall 2000	Fall 2001	Fall 2002	Fall 2003	Fall 2004	Fall 2005	Fall 2006	Fall 2007	Fall 2008	Fall 2009	Fall 2010	Fall 2011	Fall 2012	Fall 2013	Fall 2014
<b>Students of Color</b>																			
Native American	66.7%	73.7%	59.5%	68.2%	66.7%	70.4%	72.4%	85.0%	80.0%	79.2%	79.3%	71.4%	80.0%	75.0%	57.1%	70.0%	100.0%	75.0%	81.8%
African American	77.6%	68.5%	66.9%	60.1%	61.3%	70.7%	79.5%	79.6%	84.6%	82.5%	76.6%	75.8%	68.9%	81.6%	81.5%	87.7%	85.7%	84.0%	89.1%
Hispanic, Latino	71.7%	67.6%	67.7%	66.0%	71.0%	71.2%	76.2%	79.5%	76.5%	77.9%	73.7%	72.2%	73.4%	81.3%	87.2%	86.0%	86.0%	87.2%	88.3%
Asian	75.1%	68.2%	66.9%	75.1%	74.4%	78.9%	80.9%	82.0%	83.2%	82.0%	82.3%	80.4%	82.0%	81.7%	89.4%	91.2%	87.7%	89.2%	92.9%
Pacific Islander, Native Filipino	72.7%	73.7%	69.2%	56.0%	64.5%	60.7%	76.7%	69.2%	84.2%	66.7%	73.8%	68.9%	55.1%	63.6%	92.9%	62.5%	76.5%	81.0%	100.0%
Multiple Ethnicities														79.5%	87.6%	86.2%	88.9%	85.8%	88.0%
<b>Students of Color Total</b>	<b>75.2%</b>	<b>69.5%</b>	<b>68.6%</b>	<b>69.4%</b>	<b>71.9%</b>	<b>74.5%</b>	<b>78.7%</b>	<b>80.8%</b>	<b>80.4%</b>	<b>79.0%</b>	<b>76.7%</b>	<b>75.2%</b>	<b>75.8%</b>	<b>81.5%</b>	<b>87.4%</b>	<b>87.4%</b>	<b>86.9%</b>	<b>87.6%</b>	<b>89.4%</b>
<b>All Others</b>																			
White	74.5%	73.9%	74.8%	79.5%	77.9%	78.5%	81.1%	84.2%	83.7%	80.4%	82.5%	80.5%	81.1%	83.9%	89.3%	90.1%	87.6%	87.5%	89.9%
Other, Not Stated	74.8%	69.4%	72.9%	72.8%	77.0%	77.7%	82.1%	82.5%	80.8%	81.2%	84.2%	79.4%	79.0%	83.5%	92.4%	83.2%	84.2%	85.6%	89.6%
International	33.3%	76.0%	62.1%	67.9%	71.4%	72.7%	60.0%	78.6%	75.0%	88.0%	77.8%	78.8%	70.0%	73.5%	85.5%	92.5%	89.3%	87.2%	84.5%
<b>All Others Total</b>	<b>73.9%</b>	<b>73.1%</b>	<b>74.3%</b>	<b>77.9%</b>	<b>77.6%</b>	<b>78.2%</b>	<b>80.9%</b>	<b>83.9%</b>	<b>83.2%</b>	<b>80.6%</b>	<b>82.7%</b>	<b>80.3%</b>	<b>80.4%</b>	<b>83.4%</b>	<b>89.3%</b>	<b>89.8%</b>	<b>87.5%</b>	<b>87.4%</b>	<b>89.2%</b>
<b>Grand Total</b>	<b>74.6%</b>	<b>71.5%</b>	<b>71.7%</b>	<b>74.5%</b>	<b>75.3%</b>	<b>76.7%</b>	<b>80.1%</b>	<b>82.7%</b>	<b>82.1%</b>	<b>79.9%</b>	<b>80.1%</b>	<b>78.0%</b>	<b>78.2%</b>	<b>82.3%</b>	<b>88.3%</b>	<b>88.5%</b>	<b>87.1%</b>	<b>87.5%</b>	<b>89.3%</b>

**First-time Freshmen Average GPA After Year 1: Fall 1999 - Fall 2014**  
**By Admission Area, Gender, Resident Status & Ethnicity-Students of Color**  
*San Diego Campus*

**ADMISSION AREA**

Row Labels	Local	Non-Local
Fall 1999	2.45	2.66
Fall 2000	2.54	2.71
Fall 2001	2.46	2.72
Fall 2002	2.53	2.79
Fall 2003	2.51	2.85
Fall 2004	2.53	2.88
Fall 2005	2.42	2.83
Fall 2006	2.35	2.84
Fall 2007	2.33	2.88
Fall 2008	2.37	2.99
Fall 2009	2.45	3.04
Fall 2010	2.71	3.07
Fall 2011	2.73	3.02
Fall 2012	2.69	3.01
Fall 2013	2.71	3.01
Fall 2014	2.78	3.04

**GENDER**

Row Labels	Men	Women
Fall 1999	2.48	2.67
Fall 2000	2.55	2.73
Fall 2001	2.51	2.71
Fall 2002	2.58	2.82
Fall 2003	2.66	2.81
Fall 2004	2.63	2.88
Fall 2005	2.61	2.75
Fall 2006	2.53	2.74
Fall 2007	2.55	2.75
Fall 2008	2.54	2.74
Fall 2009	2.60	2.79
Fall 2010	2.85	2.96
Fall 2011	2.80	2.97
Fall 2012	2.77	2.94
Fall 2013	2.80	3.01
Fall 2014	2.83	3.06

**RESIDENT STATUS**

Row Labels	Resident /Exempt	Non-Res OOS	Non-Res Intl
Fall 1999	2.58	2.79	2.88
Fall 2000	2.65	2.76	3.20
Fall 2001	2.62	2.78	3.09
Fall 2002	2.71	2.98	2.97
Fall 2003	2.74	2.93	2.77
Fall 2004	2.77	2.98	2.83
Fall 2005	2.68	2.89	3.27
Fall 2006	2.64	3.00	2.67
Fall 2007	2.65	2.94	3.11
Fall 2008	2.64	2.85	2.74
Fall 2009	2.69	2.97	2.97
Fall 2010	2.91	2.96	2.74
Fall 2011	2.90	2.96	2.82
Fall 2012	2.86	2.89	2.88
Fall 2013	2.92	2.90	2.84
Fall 2014	2.98	2.89	2.79

**STUDENTS OF COLOR**

Row Labels	Students of Color	All Others	TOTAL
Fall 1999	2.40	2.71	2.59
Fall 2000	2.51	2.75	2.65
Fall 2001	2.46	2.76	2.63
Fall 2002	2.55	2.84	2.72
Fall 2003	2.59	2.85	2.75
Fall 2004	2.64	2.88	2.78
Fall 2005	2.53	2.82	2.69
Fall 2006	2.45	2.82	2.66
Fall 2007	2.49	2.82	2.67
Fall 2008	2.46	2.85	2.66
Fall 2009	2.55	2.93	2.71
Fall 2010	2.77	3.07	2.92
Fall 2011	2.79	3.04	2.90
Fall 2012	2.75	3.01	2.87
Fall 2013	2.83	3.02	2.92
Fall 2014	2.89	3.04	2.96

**First-time Freshmen Continued or Graduated After Years 1-6**  
**By Ethnicity-Students of Color**  
*San Diego Campus*

	% Cont Grad Yr1		% Cont Grad Yr2		% Cont Grad Yr3		% Cont Grad Yr4		% Cont Grad Yr5		% Cont Grad Yr6		Total % Cont Grad Yr1	Total % Cont Grad Yr2	Total % Cont Grad Yr3	Total % Cont Grad Yr4	Total % Cont Grad Yr5	Total % Cont Grad Yr6
	Students of All Others		Students of All Others		Students of All Others		Students of All Others		Students of All Others		Students of All Others							
Fall 1996	75.2 %	73.9 %	55.5 %	58.8 %	50.1 %	54.8 %	47.2 %	51.3 %	43.8 %	48.2 %	42.6 %	47.1 %	74.6 %	57.2 %	52.6 %	49.3 %	46.1 %	44.9 %
Fall 1997	69.5 %	73.1 %	56.2 %	62.6 %	51.8 %	58.6 %	50.6 %	56.3 %	46.4 %	52.6 %	43.9 %	52.0 %	71.5 %	59.7 %	55.5 %	53.7 %	49.8 %	48.3 %
Fall 1998	68.6 %	74.3 %	57.7 %	63.9 %	53.1 %	60.2 %	50.7 %	56.8 %	46.6 %	52.6 %	45.8 %	52.4 %	71.7 %	61.0 %	56.9 %	54.0 %	49.8 %	49.4 %
Fall 1999	69.4 %	77.9 %	61.0 %	67.5 %	56.1 %	64.5 %	55.3 %	61.6 %	53.2 %	58.7 %	51.2 %	58.8 %	74.5 %	64.9 %	61.1 %	59.0 %	56.5 %	55.7 %
Fall 2000	71.9 %	77.6 %	63.9 %	68.5 %	61.7 %	65.3 %	58.7 %	61.4 %	56.2 %	60.8 %	57.2 %	61.0 %	75.3 %	66.7 %	63.9 %	60.3 %	59.0 %	59.5 %
Fall 2001	74.5 %	78.2 %	66.2 %	67.3 %	62.2 %	63.4 %	59.0 %	61.7 %	57.7 %	60.5 %	56.8 %	61.1 %	76.7 %	66.8 %	62.9 %	60.6 %	59.3 %	59.3 %
Fall 2002	78.7 %	80.9 %	68.1 %	71.7 %	64.2 %	68.5 %	62.0 %	67.6 %	60.7 %	66.3 %	60.0 %	66.3 %	80.1 %	70.3 %	66.9 %	65.4 %	64.2 %	63.8 %
Fall 2003	80.8 %	83.9 %	72.6 %	75.2 %	67.8 %	71.5 %	66.2 %	70.5 %	65.5 %	69.3 %	65.6 %	70.2 %	82.7 %	74.2 %	70.1 %	68.9 %	67.8 %	68.4 %
Fall 2004	80.4 %	83.2 %	72.1 %	72.4 %	67.7 %	69.7 %	66.7 %	68.9 %	65.9 %	68.4 %	66.4 %	68.7 %	82.1 %	72.3 %	68.9 %	68.0 %	67.4 %	67.8 %
Fall 2005	79.0 %	80.6 %	69.4 %	71.3 %	66.8 %	69.2 %	65.3 %	68.7 %	64.6 %	68.4 %	65.4 %	69.0 %	79.9 %	70.5 %	68.2 %	67.3 %	66.8 %	67.5 %
Fall 2006	76.7 %	82.7 %	67.5 %	72.1 %	63.9 %	69.7 %	63.0 %	70.1 %	62.6 %	69.8 %	62.3 %	69.5 %	80.1 %	70.1 %	67.1 %	67.0 %	66.6 %	66.3 %
Fall 2007	75.2 %	80.3 %	67.4 %	71.7 %	64.1 %	70.9 %	63.6 %	70.7 %	61.5 %	69.3 %	62.3 %	69.6 %	78.0 %	69.7 %	67.9 %	67.5 %	65.8 %	66.3 %
Fall 2008	75.8 %	80.4 %	68.8 %	72.8 %	65.8 %	71.0 %	63.7 %	69.6 %	62.5 %	68.8 %	63.6 %	70.7 %	78.2 %	70.8 %	68.4 %	66.7 %	65.7 %	67.2 %
Fall 2009	81.5 %	83.4 %	72.7 %	76.1 %	68.0 %	74.1 %	66.1 %	72.9 %	64.1 %	72.9 %	63.9 %	73.8 %	82.3 %	74.1 %	70.6 %	69.0 %	67.9 %	68.1 %
Fall 2010	87.4 %	89.3 %	79.2 %	79.4 %	76.3 %	78.0 %	74.6 %	78.6 %	74.2 %	78.1 %	0.0 %	0.0 %	88.3 %	79.3 %	77.1 %	76.5 %	76.1 %	0.0 %
Fall 2011	87.4 %	89.8 %	80.0 %	80.5 %	76.0 %	78.1 %	75.7 %	77.7 %	0.0 %	0.0 %	0.0 %	0.0 %	88.5 %	80.2 %	77.0 %	76.6 %	0.0 %	0.0 %
Fall 2012	86.9 %	87.5 %	80.0 %	78.5 %	76.9 %	77.4 %	0.0 %	0.0 %	0.0 %	0.0 %	0.0 %	0.0 %	87.1 %	79.3 %	77.1 %	0.0 %	0.0 %	0.0 %
Fall 2013	87.6 %	87.4 %	79.9 %	77.8 %	0.0 %	0.0 %	0.0 %	0.0 %	0.0 %	0.0 %	0.0 %	0.0 %	87.5 %	79.0 %	0.0 %	0.0 %	0.0 %	0.0 %
Fall 2014	89.4 %	89.2 %	0.0 %	0.0 %	0.0 %	0.0 %	0.0 %	0.0 %	0.0 %	0.0 %	0.0 %	0.0 %	89.3 %	0.0 %	0.0 %	0.0 %	0.0 %	0.0 %

## First-time FULL-TIME Freshmen Graduation Rates By Ethnicity San Diego Campus

### Four-Year Graduation Rates

Row Labels	Fall 1999	Fall 2000	Fall 2001	Fall 2002	Fall 2003	Fall 2004	Fall 2005	Fall 2006	Fall 2007	Fall 2008	Fall 2009	Fall 2010	Fall 2011
<b>Students of Color</b>													
Native American	5.3 %	16.7 %	21.1 %	16.0 %	25.0 %	44.4 %	30.0 %	36.0 %	33.3 %	25.9 %	12.5 %	28.6 %	20.0 %
African American	5.5 %	11.5 %	19.2 %	17.1 %	21.5 %	33.0 %	22.1 %	26.0 %	22.0 %	24.2 %	20.0 %	24.0 %	29.9 %
Hispanic, Latino	9.4 %	14.5 %	15.0 %	16.8 %	23.3 %	22.7 %	23.6 %	24.6 %	24.4 %	21.1 %	23.7 %	24.3 %	28.3 %
Asian	13.3 %	13.2 %	17.9 %	19.4 %	27.5 %	23.3 %	31.0 %	28.3 %	29.0 %	26.5 %	27.2 %	32.1 %	29.5 %
Pacific Islander, Native Hawaiian	4.8 %	11.1 %	9.1 %	18.5 %	17.4 %	24.1 %	39.3 %	21.6 %	31.7 %	17.5 %	0.0 %	25.0 %	25.0 %
Filipino	11.9 %	12.8 %	11.6 %	20.4 %	16.7 %	23.1 %	21.1 %	21.9 %	25.9 %	15.4 %	16.3 %	22.0 %	19.3 %
Multiple Ethnicities											30.7 %	31.0 %	34.0 %
<b>Students of Color Total</b>	<b>10.1 %</b>	<b>13.6 %</b>	<b>15.5 %</b>	<b>18.0 %</b>	<b>22.8 %</b>	<b>24.1 %</b>	<b>24.7 %</b>	<b>25.0 %</b>	<b>25.7 %</b>	<b>21.1 %</b>	<b>23.5 %</b>	<b>26.0 %</b>	<b>28.0 %</b>
<b>All Others</b>													
White	16.5 %	19.3 %	21.7 %	28.5 %	32.8 %	34.2 %	32.9 %	36.4 %	37.7 %	38.1 %	37.2 %	42.6 %	45.0 %
Other, Not Stated	14.7 %	16.3 %	24.1 %	23.3 %	26.4 %	29.4 %	30.4 %	38.0 %	38.8 %	29.0 %	36.5 %	40.6 %	36.4 %
International	12.2 %	13.8 %	26.8 %	16.7 %	13.5 %	37.0 %	38.9 %	35.5 %	36.8 %	33.9 %	30.2 %	16.9 %	50.6 %
<b>All Others Total</b>	<b>16.0 %</b>	<b>18.7 %</b>	<b>22.2 %</b>	<b>27.5 %</b>	<b>31.7 %</b>	<b>33.5 %</b>	<b>32.6 %</b>	<b>36.6 %</b>	<b>37.8 %</b>	<b>36.6 %</b>	<b>36.9 %</b>	<b>41.4 %</b>	<b>44.8 %</b>
<b>Grand Total</b>	<b>13.9 %</b>	<b>16.8 %</b>	<b>19.6 %</b>	<b>24.0 %</b>	<b>28.4 %</b>	<b>30.2 %</b>	<b>29.6 %</b>	<b>32.1 %</b>	<b>33.1 %</b>	<b>29.5 %</b>	<b>30.1 %</b>	<b>33.7 %</b>	<b>36.0 %</b>

### Five-Year Graduation Rates

Row Labels	Fall 1999	Fall 2000	Fall 2001	Fall 2002	Fall 2003	Fall 2004	Fall 2005	Fall 2006	Fall 2007	Fall 2008	Fall 2009	Fall 2010
<b>Students of Color</b>												
Native American	31.6 %	50.0 %	47.4 %	48.0 %	55.0 %	61.1 %	55.0 %	60.0 %	66.7 %	66.7 %	12.5 %	28.6 %
African American	19.1 %	37.7 %	42.3 %	51.8 %	48.8 %	59.8 %	49.0 %	54.7 %	54.3 %	44.5 %	40.0 %	51.0 %
Hispanic, Latino	31.1 %	41.8 %	40.3 %	45.1 %	49.7 %	52.7 %	48.9 %	54.5 %	50.3 %	49.0 %	51.4 %	58.6 %
Asian	38.9 %	40.6 %	45.5 %	53.1 %	58.1 %	63.3 %	57.7 %	61.6 %	59.8 %	52.3 %	60.2 %	63.8 %
Pacific Islander, Native Hawaiian	33.3 %	29.6 %	31.8 %	48.1 %	39.1 %	51.7 %	60.7 %	58.8 %	53.7 %	30.0 %	30.0 %	75.0 %
Filipino	39.5 %	43.9 %	43.0 %	44.6 %	47.1 %	53.8 %	52.0 %	48.4 %	54.1 %	44.0 %	48.8 %	60.2 %
Multiple Ethnicities											55.1 %	59.3 %
<b>Students of Color Total</b>	<b>33.2 %</b>	<b>41.3 %</b>	<b>42.3 %</b>	<b>47.6 %</b>	<b>50.9 %</b>	<b>55.7 %</b>	<b>51.6 %</b>	<b>54.9 %</b>	<b>53.6 %</b>	<b>48.0 %</b>	<b>51.5 %</b>	<b>59.1 %</b>
<b>All Others</b>												
White	48.5 %	51.0 %	49.8 %	57.4 %	62.7 %	60.4 %	61.7 %	62.5 %	63.1 %	64.3 %	67.2 %	71.7 %
Other, Not Stated	43.1 %	45.4 %	51.1 %	53.3 %	56.6 %	59.8 %	58.8 %	63.8 %	64.6 %	57.3 %	64.7 %	73.6 %
International	39.0 %	37.9 %	43.9 %	40.0 %	51.4 %	63.0 %	72.2 %	51.6 %	60.3 %	58.1 %	64.2 %	52.5 %
<b>All Others Total</b>	<b>47.3 %</b>	<b>49.9 %</b>	<b>49.9 %</b>	<b>56.5 %</b>	<b>61.8 %</b>	<b>60.3 %</b>	<b>61.4 %</b>	<b>62.5 %</b>	<b>63.2 %</b>	<b>63.1 %</b>	<b>66.9 %</b>	<b>71.0 %</b>
<b>Grand Total</b>	<b>42.2 %</b>	<b>46.7 %</b>	<b>47.0 %</b>	<b>53.2 %</b>	<b>57.8 %</b>	<b>58.7 %</b>	<b>57.7 %</b>	<b>59.6 %</b>	<b>59.5 %</b>	<b>56.2 %</b>	<b>59.1 %</b>	<b>65.1 %</b>

**First-time FULL-TIME Freshmen Graduation Rates  
By Ethnicity  
San Diego Campus**

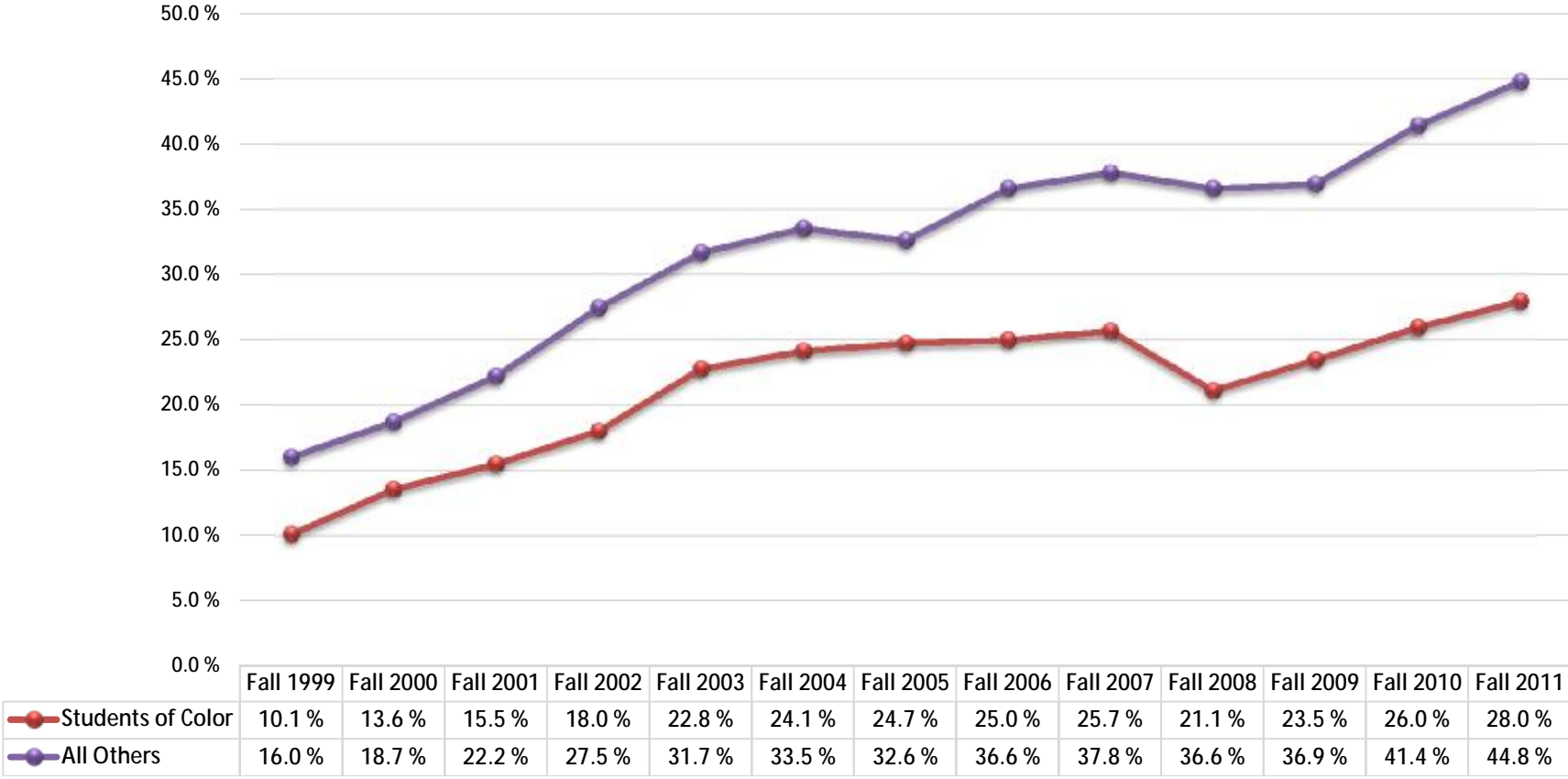
**Six-Year Graduation Rates**

Row Labels	Fall 1999	Fall 2000	Fall 2001	Fall 2002	Fall 2003	Fall 2004	Fall 2005	Fall 2006	Fall 2007	Fall 2008	Fall 2009
<b>Students of Color</b>											
Native American	42.1 %	66.7 %	57.9 %	60.0 %	65.0 %	61.1 %	60.0 %	64.0 %	70.4 %	70.4 %	25.0 %
African American	25.5 %	45.4 %	50.0 %	62.2 %	58.7 %	63.4 %	55.8 %	63.3 %	64.0 %	57.0 %	53.0 %
Hispanic, Latino	42.8 %	53.3 %	51.8 %	52.8 %	60.3 %	61.4 %	58.3 %	61.8 %	59.7 %	59.1 %	63.0 %
Asian	51.2 %	56.9 %	55.5 %	61.9 %	68.7 %	73.1 %	69.5 %	69.4 %	69.3 %	66.7 %	74.9 %
Pacific Islander, Native Hawaiian	33.3 %	33.3 %	31.8 %	63.0 %	47.8 %	58.6 %	60.7 %	60.8 %	58.5 %	40.0 %	40.0 %
Filipino	59.0 %	56.1 %	54.7 %	60.0 %	59.9 %	65.2 %	62.9 %	62.3 %	64.2 %	65.4 %	65.4 %
Multiple Ethnicities											64.9 %
<b>Students of Color Total</b>	<b>45.7 %</b>	<b>53.2 %</b>	<b>52.8 %</b>	<b>57.4 %</b>	<b>61.8 %</b>	<b>64.6 %</b>	<b>61.3 %</b>	<b>63.5 %</b>	<b>63.0 %</b>	<b>61.1 %</b>	<b>64.0 %</b>
<b>Other</b>											
White	58.8 %	60.0 %	57.3 %	64.1 %	69.5 %	67.4 %	68.7 %	68.2 %	69.1 %	71.8 %	73.3 %
Other, Not Stated	51.3 %	58.5 %	62.6 %	62.0 %	67.5 %	65.6 %	66.8 %	70.9 %	71.4 %	69.6 %	73.1 %
International	46.3 %	51.7 %	63.4 %	46.7 %	59.5 %	63.0 %	72.2 %	64.5 %	69.1 %	61.3 %	69.8 %
<b>Other Total</b>	<b>57.1 %</b>	<b>59.7 %</b>	<b>58.3 %</b>	<b>63.5 %</b>	<b>69.1 %</b>	<b>67.1 %</b>	<b>68.5 %</b>	<b>68.5 %</b>	<b>69.4 %</b>	<b>71.2 %</b>	<b>73.2 %</b>
<b>Grand Total</b>	<b>53.0 %</b>	<b>57.3 %</b>	<b>56.1 %</b>	<b>61.3 %</b>	<b>66.4 %</b>	<b>66.2 %</b>	<b>65.7 %</b>	<b>66.5 %</b>	<b>66.9 %</b>	<b>66.6 %</b>	<b>68.5 %</b>

**COHORT ENROLLMENT**

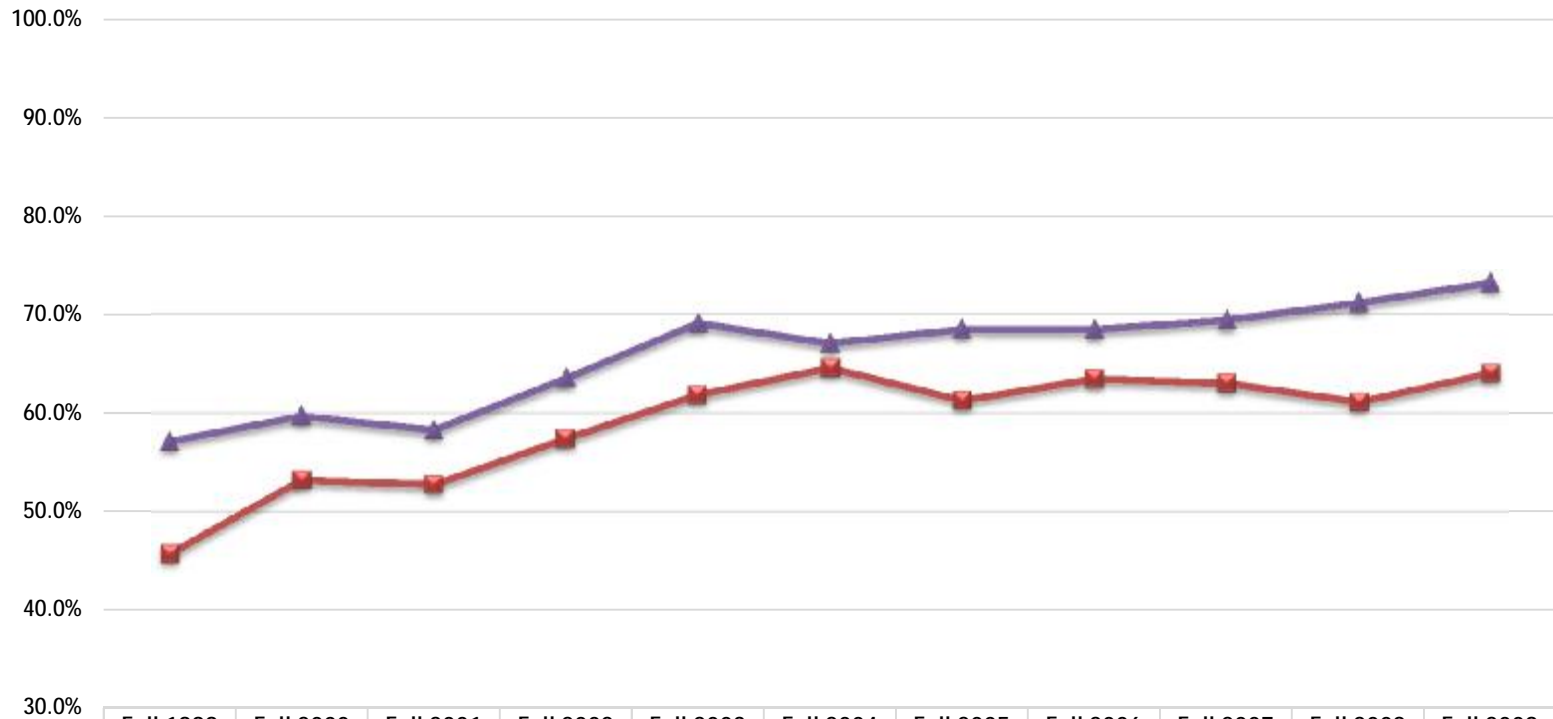
Row Labels	Fall 1999	Fall 2000	Fall 2001	Fall 2002	Fall 2003	Fall 2004	Fall 2005	Fall 2006	Fall 2007	Fall 2008	Fall 2009	Fall 2010	Fall 2011
<b>Students of Color</b>													
Native American	19	18	19	25	20	18	20	25	27	27	8	7	10
African American	110	130	156	164	121	112	104	150	164	128	100	96	107
Hispanic, Latino	456	495	568	614	572	596	609	736	837	833	886	736	948
Asian	203	197	319	273	284	245	239	297	348	264	191	196	261
Pacific Islander, Native Hawaiian	21	27	22	27	23	29	28	51	41	40	10	12	8
Filipino	210	187	258	240	227	247	294	310	316	318	246	236	270
Multiple Ethnicities											205	216	256
<b>Students of Color Total</b>	<b>1019</b>	<b>1054</b>	<b>1342</b>	<b>1343</b>	<b>1247</b>	<b>1247</b>	<b>1294</b>	<b>1569</b>	<b>1733</b>	<b>1610</b>	<b>1646</b>	<b>1499</b>	<b>1860</b>
<b>Other</b>													
White	1433	1484	1753	1890	1858	1902	1803	2157	2310	1573	1386	1330	1530
Other, Not Stated	341	282	348	400	265	323	289	326	353	286	156	106	107
International	41	29	41	30	37	27	18	31	68	62	53	59	83
<b>Other Total</b>	<b>1815</b>	<b>1795</b>	<b>2142</b>	<b>2320</b>	<b>2160</b>	<b>2252</b>	<b>2110</b>	<b>2514</b>	<b>2731</b>	<b>1921</b>	<b>1595</b>	<b>1495</b>	<b>1720</b>
<b>Grand Total</b>	<b>2834</b>	<b>2849</b>	<b>3484</b>	<b>3663</b>	<b>3407</b>	<b>3499</b>	<b>3404</b>	<b>4083</b>	<b>4464</b>	<b>3531</b>	<b>3241</b>	<b>2994</b>	<b>3580</b>

# First-time FULL-TIME Freshmen Four-Year Graduation Rates By Ethnicity-Students of Color *San Diego Campus*





## First-time FULL-TIME Freshmen Six-Year Graduation Rates By Ethnicity-Students of Color *San Diego Campus*

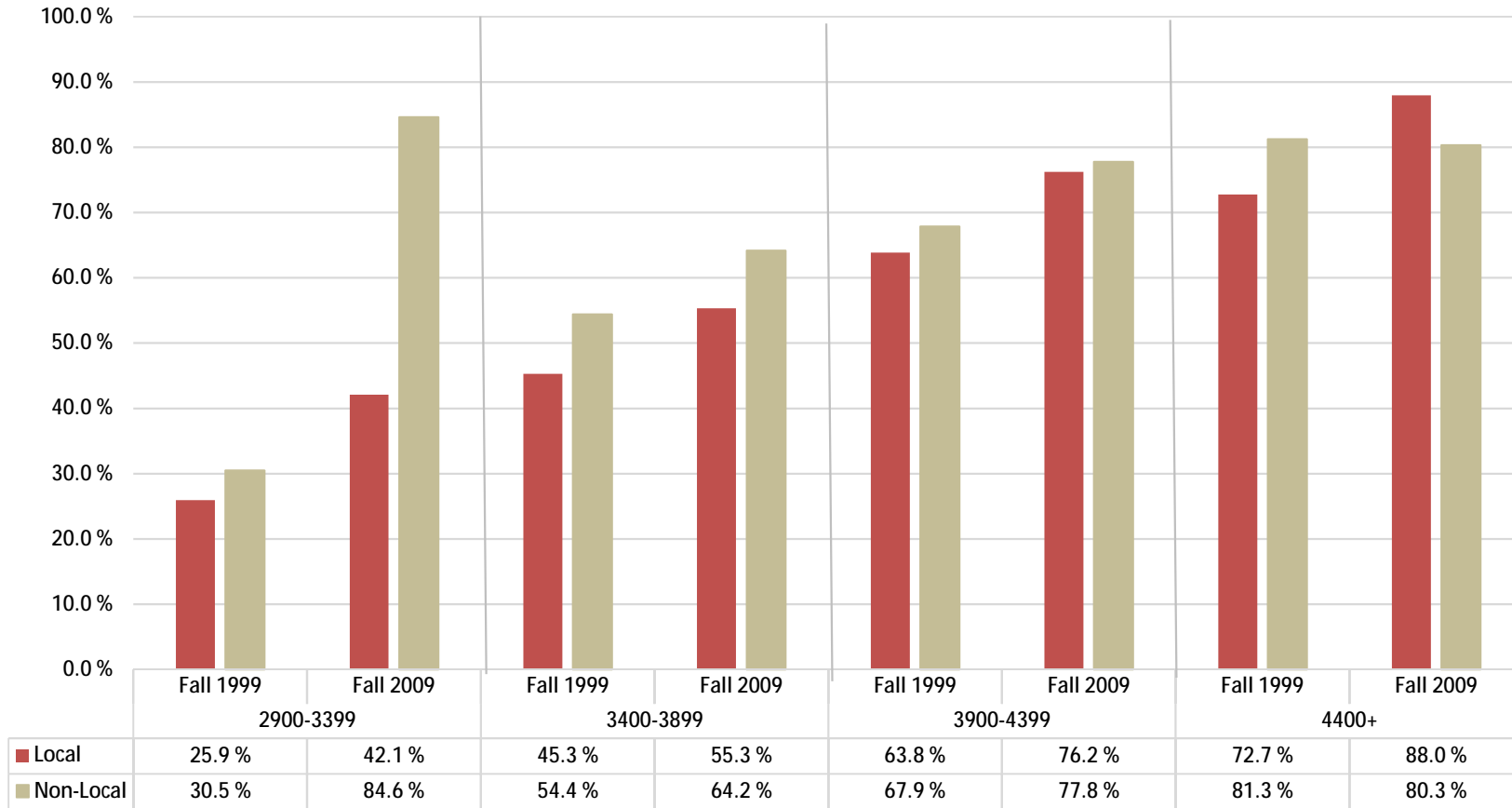


	Fall 1999	Fall 2000	Fall 2001	Fall 2002	Fall 2003	Fall 2004	Fall 2005	Fall 2006	Fall 2007	Fall 2008	Fall 2009
Students of Color	45.7%	53.2%	52.8%	57.4%	61.8%	64.6%	61.3%	63.5%	63.0%	61.1%	64.0%
All Others	57.1%	59.7%	58.3%	63.5%	69.1%	67.1%	68.5%	68.5%	69.4%	71.2%	73.2%

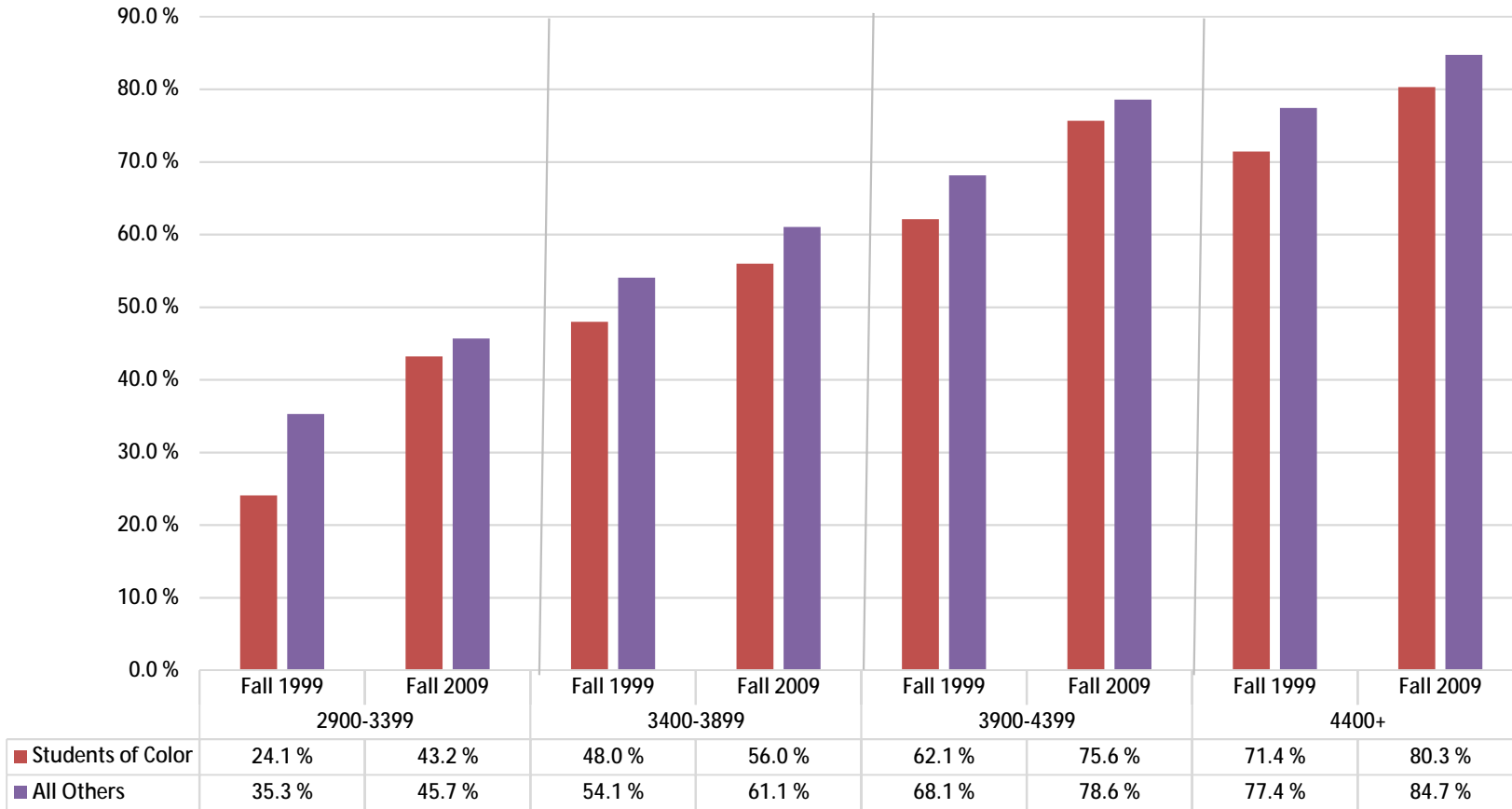
**First-time FULL-TIME Freshmen Six-Year Graduation Rates**  
**By Ethnicity**  
*San Diego Campus*

Row Labels	Fall 1999	Fall 2000	Fall 2001	Fall 2002	Fall 2003	Fall 2004	Fall 2005	Fall 2006	Fall 2007	Fall 2008	Fall 2009
<b>Student of Color</b>											
Native American	42.1%	66.7%	57.9%	60.0%	65.0%	61.1%	60.0%	64.0%	70.4%	70.4%	25.0%
African American	25.5%	45.4%	50.0%	62.2%	58.7%	63.4%	55.8%	63.3%	64.0%	57.0%	53.0%
Hispanic, Latino	42.8%	53.3%	51.8%	52.8%	60.3%	61.4%	58.3%	61.8%	59.7%	59.1%	63.0%
Asian	51.2%	56.9%	55.5%	61.9%	68.7%	73.1%	69.5%	69.4%	69.3%	66.7%	74.9%
Pacific Islander, Native H	33.3%	33.3%	31.8%	63.0%	47.8%	58.6%	60.7%	60.8%	58.5%	40.0%	40.0%
Filipino	59.0%	56.1%	54.7%	60.0%	59.9%	65.2%	62.9%	62.3%	64.2%	65.4%	65.4%
Multiple Ethnicities											64.9%
<b>Student of Color Total</b>	<b>45.7%</b>	<b>53.2%</b>	<b>52.8%</b>	<b>57.4%</b>	<b>61.8%</b>	<b>64.6%</b>	<b>61.3%</b>	<b>63.5%</b>	<b>63.0%</b>	<b>61.1%</b>	<b>64.0%</b>
<b>All Others</b>											
White	58.8%	60.0%	57.3%	64.1%	69.5%	67.4%	68.7%	68.2%	69.1%	71.8%	73.3%
Other, Not Stated	51.3%	58.5%	62.6%	62.0%	67.5%	65.6%	66.8%	70.9%	71.4%	69.6%	73.1%
International	46.3%	51.7%	63.4%	46.7%	59.5%	63.0%	72.2%	64.5%	69.1%	61.3%	69.8%
<b>All Others Total</b>	<b>57.1%</b>	<b>59.7%</b>	<b>58.3%</b>	<b>63.5%</b>	<b>69.1%</b>	<b>67.1%</b>	<b>68.5%</b>	<b>68.5%</b>	<b>69.4%</b>	<b>71.2%</b>	<b>73.2%</b>
<b>Grand Total</b>	<b>53.0%</b>	<b>57.3%</b>	<b>56.1%</b>	<b>61.3%</b>	<b>66.4%</b>	<b>66.2%</b>	<b>65.7%</b>	<b>66.5%</b>	<b>66.9%</b>	<b>66.6%</b>	<b>68.5%</b>

## First-time FULL-TIME Freshmen Six-Year Graduation Rates By Eligibility Index Range & Admission Area: Fall 1999 & Fall 2009 Cohorts *San Diego Campus*



# First-time FULL-TIME Freshmen Six-Year Graduation Rates By Eligibility Index Range & Ethnicity-Students of Color: Fall 1999 & Fall 2009 Cohorts *San Diego Campus*



**New UG Transfers & Readmits: One-Year Continuation Rates  
By Ethnicity  
San Diego Campus**

	Fall 1996	Fall 1997	Fall 1998	Fall 1999	Fall 2000	Fall 2001	Fall 2002	Fall 2003	Fall 2004	Fall 2005	Fall 2006	Fall 2007	Fall 2008	Fall 2009	Fall 2010	Fall 2011	Fall 2012	Fall 2013	Fall 2014
<b>Students of Color</b>																			
Native American	67.4%	70.0%	67.6%	69.6%	84.0%	70.0%	82.6%	84.0%	68.4%	75.8%	67.6%	91.2%	92.9%	71.4%	100.0%	85.7%	86.7%	89.5%	100.0%
African American	74.7%	65.6%	70.0%	69.9%	80.4%	80.0%	73.8%	83.1%	85.6%	80.7%	74.5%	80.1%	83.0%	93.5%	87.5%	78.5%	89.1%	85.6%	89.1%
Hispanic, Latino	75.8%	75.4%	77.7%	78.9%	80.6%	76.8%	83.6%	83.2%	83.0%	82.1%	80.9%	83.4%	88.3%	89.5%	87.5%	88.9%	87.9%	88.2%	89.5%
Asian	74.0%	77.2%	83.1%	79.9%	78.6%	81.9%	81.2%	79.9%	85.6%	84.8%	83.4%	80.9%	90.0%	85.1%	82.7%	88.0%	89.1%	88.0%	90.4%
Pacific Islander, Native	75.9%	82.4%	81.0%	82.4%	85.7%	78.9%	78.9%	89.7%	86.7%	70.0%	66.7%	87.9%	89.2%	94.4%	91.7%	66.7%	90.0%	85.7%	60.0%
Filipino	74.9%	73.3%	75.5%	69.4%	81.0%	72.2%	83.9%	78.9%	79.0%	80.5%	81.2%	80.5%	89.6%	83.1%	91.7%	91.7%	87.3%	92.7%	91.5%
Multiple Ethnicities														89.8%	88.3%	87.5%	92.6%	90.9%	88.8%
<b>Students of Color Total</b>	<b>74.9%</b>	<b>74.3%</b>	<b>77.4%</b>	<b>76.6%</b>	<b>80.5%</b>	<b>77.2%</b>	<b>82.2%</b>	<b>82.1%</b>	<b>82.7%</b>	<b>81.8%</b>	<b>80.1%</b>	<b>82.5%</b>	<b>88.4%</b>	<b>88.4%</b>	<b>87.5%</b>	<b>88.1%</b>	<b>88.5%</b>	<b>88.7%</b>	<b>89.6%</b>
<b>All Others</b>																			
White	79.8%	78.5%	78.5%	80.1%	83.0%	83.6%	83.9%	84.8%	85.8%	83.7%	83.6%	84.4%	87.6%	88.0%	88.0%	88.6%	89.8%	88.9%	93.8%
Other, Not Stated	79.3%	80.5%	78.0%	77.7%	80.2%	84.5%	81.4%	83.8%	83.6%	81.7%	87.5%	84.7%	87.4%	88.6%	90.4%	84.7%	90.3%	89.4%	85.9%
International	75.3%	74.2%	75.0%	72.1%	77.6%	84.4%	87.3%	82.8%	80.9%	78.1%	90.2%	83.3%	85.7%	79.8%	78.3%	87.6%	88.5%	87.1%	87.4%
<b>All Others Total</b>	<b>79.5%</b>	<b>78.8%</b>	<b>78.3%</b>	<b>79.1%</b>	<b>81.9%</b>	<b>83.9%</b>	<b>83.5%</b>	<b>84.5%</b>	<b>84.9%</b>	<b>82.9%</b>	<b>84.7%</b>	<b>84.4%</b>	<b>87.4%</b>	<b>87.0%</b>	<b>87.3%</b>	<b>87.8%</b>	<b>89.7%</b>	<b>88.8%</b>	<b>91.9%</b>
<b>Grand Total</b>	<b>77.7%</b>	<b>77.1%</b>	<b>78.0%</b>	<b>78.3%</b>	<b>81.4%</b>	<b>81.5%</b>	<b>83.0%</b>	<b>83.5%</b>	<b>84.0%</b>	<b>82.5%</b>	<b>82.8%</b>	<b>83.6%</b>	<b>87.8%</b>	<b>87.7%</b>	<b>87.4%</b>	<b>87.9%</b>	<b>89.1%</b>	<b>88.7%</b>	<b>90.7%</b>

## New Upper Division FULL-TIME Transfers Graduation Rates By Ethnicity San Diego Campus

### Two-Year Graduation Rates

Row Labels	Fall 1999	Fall 2000	Fall 2001	Fall 2002	Fall 2003	Fall 2004	Fall 2005	Fall 2006	Fall 2007	Fall 2008	Fall 2009	Fall 2010	Fall 2011	Fall 2012	Fall 2013
Native American	25.0 %	25.0 %	7.7 %	19.0 %	31.6 %	37.1 %	48.0 %	16.7 %	40.7 %	33.3 %	27.3 %	28.6 %	66.7 %	38.5 %	46.7 %
African American	16.1 %	23.1 %	25.0 %	18.2 %	23.8 %	33.3 %	35.9 %	34.9 %	27.3 %	24.7 %	35.6 %	40.8 %	30.2 %	39.2 %	33.7 %
Hispanic, Latino	19.7 %	18.8 %	19.9 %	25.6 %	30.6 %	31.3 %	30.3 %	31.7 %	29.7 %	37.5 %	41.6 %	44.8 %	37.0 %	38.8 %	42.2 %
Asian	12.4 %	22.5 %	16.7 %	29.1 %	27.3 %	43.0 %	43.3 %	31.6 %	28.1 %	38.7 %	26.9 %	35.0 %	29.1 %	36.0 %	31.3 %
Pacific Islander, Native H	55.6 %	22.2 %	27.3 %	7.7 %	52.9 %	33.3 %	25.0 %	25.0 %	40.7 %	32.1 %	53.8 %	50.0 %	33.3 %	44.4 %	25.0 %
Filipino	20.8 %	32.1 %	21.1 %	30.4 %	26.4 %	29.9 %	30.0 %	27.9 %	29.7 %	28.5 %	35.5 %	40.0 %	25.6 %	39.1 %	36.5 %
Multiple Ethnicities											44.9 %	45.0 %	37.4 %	39.8 %	39.4 %
Total	18.8 %	21.8 %	19.9 %	25.7 %	29.2 %	33.4 %	33.4 %	31.1 %	29.7 %	35.1 %	39.0 %	42.7 %	34.8 %	38.6 %	39.5 %
All Others															
White	23.6 %	25.5 %	25.4 %	35.2 %	36.7 %	42.3 %	39.3 %	36.8 %	35.4 %	39.9 %	47.1 %	48.3 %	39.0 %	42.2 %	47.0 %
Other, Not Stated	19.7 %	22.7 %	27.8 %	27.6 %	34.5 %	40.7 %	41.4 %	33.4 %	31.2 %	32.9 %	45.3 %	44.5 %	36.6 %	49.1 %	40.6 %
International	28.8 %	30.6 %	29.7 %	47.2 %	38.1 %	41.2 %	47.5 %	41.6 %	38.8 %	42.2 %	41.0 %	49.2 %	43.2 %	52.3 %	42.9 %
All Others Total	23.0 %	25.2 %	26.3 %	34.3 %	36.4 %	41.9 %	40.3 %	36.4 %	34.9 %	38.9 %	45.9 %	47.8 %	39.3 %	44.0 %	45.6 %
Grand Total	21.6 %	24.1 %	24.2 %	31.2 %	33.8 %	38.5 %	37.6 %	34.4 %	32.9 %	37.5 %	42.8 %	45.3 %	37.1 %	41.2 %	42.4 %

### Three-Year Graduation Rates

Row Labels	Fall 1999	Fall 2000	Fall 2001	Fall 2002	Fall 2003	Fall 2004	Fall 2005	Fall 2006	Fall 2007	Fall 2008	Fall 2009	Fall 2010	Fall 2011	Fall 2012
Native American	50.0 %	43.8 %	23.1 %	42.9 %	63.2 %	65.7 %	72.0 %	50.0 %	70.4 %	75.0 %	72.7 %	71.4 %	66.7 %	84.6 %
African American	37.1 %	48.1 %	48.3 %	43.9 %	55.0 %	52.8 %	63.2 %	54.7 %	64.6 %	64.4 %	69.9 %	78.9 %	69.8 %	72.2 %
Hispanic, Latino	49.6 %	54.0 %	48.7 %	58.7 %	62.8 %	64.9 %	65.7 %	64.9 %	64.1 %	71.8 %	74.0 %	75.7 %	71.5 %	75.3 %
Asian	50.4 %	55.0 %	55.6 %	61.9 %	66.0 %	73.4 %	73.8 %	70.6 %	64.8 %	76.7 %	70.4 %	73.3 %	69.9 %	71.9 %
Pacific Islander, Native H	55.6 %	44.4 %	72.7 %	53.8 %	76.5 %	58.3 %	55.0 %	55.0 %	85.2 %	67.9 %	100.0 %	80.0 %	83.3 %	88.9 %
Filipino	54.2 %	64.1 %	53.5 %	62.7 %	56.0 %	60.6 %	67.5 %	65.4 %	69.0 %	70.1 %	61.8 %	75.0 %	67.9 %	76.6 %
Multiple Ethnicities											73.1 %	83.8 %	75.8 %	81.2 %
Total	49.1 %	54.6 %	50.2 %	58.0 %	61.9 %	64.7 %	67.0 %	64.4 %	65.5 %	71.7 %	72.1 %	76.3 %	71.4 %	75.4 %
All Others														
White	60.6 %	65.0 %	63.1 %	69.3 %	72.5 %	73.7 %	74.0 %	71.0 %	70.7 %	78.3 %	78.2 %	79.5 %	78.2 %	78.3 %
Other, Not Stated	55.0 %	57.7 %	58.8 %	64.2 %	68.3 %	70.3 %	73.2 %	67.8 %	67.9 %	70.7 %	69.8 %	78.1 %	67.9 %	78.7 %
International	68.5 %	76.5 %	73.9 %	78.7 %	77.3 %	73.6 %	77.1 %	69.0 %	76.3 %	73.3 %	73.9 %	77.8 %	79.5 %	83.1 %
All Others Total	59.8 %	64.2 %	63.0 %	68.8 %	72.0 %	73.1 %	74.1 %	70.3 %	70.7 %	76.5 %	76.1 %	79.1 %	76.8 %	78.8 %
Grand Total	56.3 %	61.1 %	58.9 %	65.0 %	68.3 %	69.7 %	71.3 %	68.0 %	68.7 %	74.8 %	74.3 %	77.7 %	74.2 %	77.1 %

**New Upper Division FULL-TIME Transfers Graduation Rates**  
**By Ethnicity**  
*San Diego Campus*

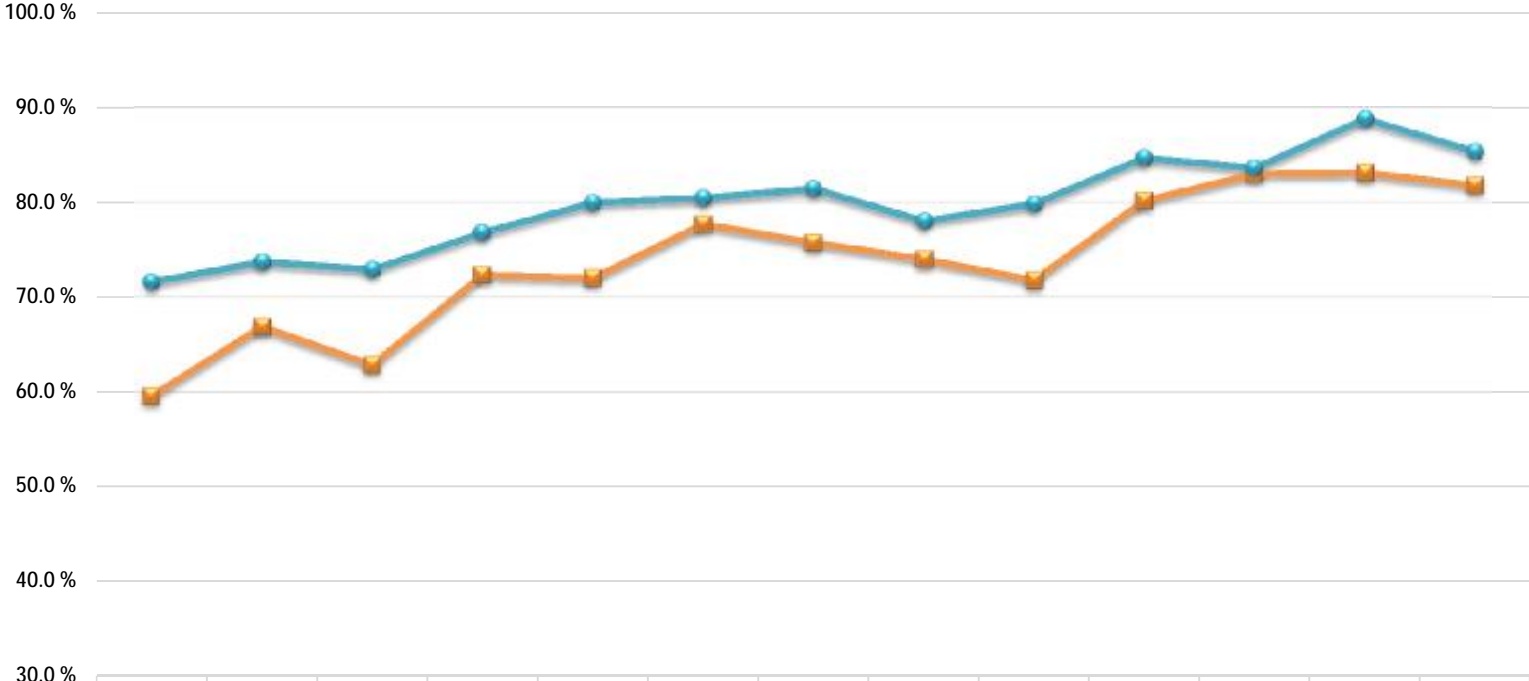
**Four-Year Graduation Rates**

Row Labels	Fall 1999	Fall 2000	Fall 2001	Fall 2002	Fall 2003	Fall 2004	Fall 2005	Fall 2006	Fall 2007	Fall 2008	Fall 2009	Fall 2010	Fall 2011
Native American	58.3 %	68.8 %	38.5 %	61.9 %	68.4 %	74.3 %	76.0 %	58.3 %	77.8 %	75.0 %	90.9 %	100.0 %	66.7 %
African American	45.2 %	57.7 %	56.7 %	54.5 %	72.5 %	61.1 %	70.1 %	67.9 %	71.7 %	75.3 %	84.9 %	90.1 %	90.7 %
Hispanic, Latino	62.8 %	66.3 %	63.6 %	70.2 %	72.2 %	76.4 %	76.3 %	75.5 %	72.9 %	80.5 %	84.0 %	84.2 %	83.2 %
Asian	61.9 %	73.8 %	62.0 %	72.4 %	78.0 %	83.5 %	84.0 %	75.7 %	73.3 %	85.3 %	81.5 %	81.7 %	82.5 %
Pacific Islander, Native H	55.6 %	44.4 %	72.7 %	61.5 %	76.5 %	75.0 %	70.0 %	75.0 %	92.6 %	78.6 %	100.0 %	90.0 %	83.3 %
Filipino	68.1 %	73.1 %	60.6 %	77.5 %	68.8 %	73.0 %	76.7 %	74.3 %	78.5 %	82.5 %	72.7 %	82.5 %	74.4 %
Multiple Ethnicities											83.3 %	88.8 %	86.8 %
Total	61.3 %	67.2 %	62.1 %	69.8 %	72.8 %	75.8 %	76.9 %	74.3 %	74.1 %	81.1 %	82.7 %	84.7 %	82.9 %
Other													
White	71.8 %	74.2 %	72.8 %	78.9 %	80.3 %	82.2 %	81.0 %	78.8 %	79.3 %	86.1 %	86.2 %	87.9 %	84.8 %
Other, Not Stated	67.5 %	70.4 %	70.9 %	75.3 %	77.0 %	81.0 %	81.9 %	76.3 %	79.4 %	80.2 %	77.1 %	87.1 %	79.1 %
International	75.3 %	80.0 %	83.8 %	84.3 %	86.6 %	82.4 %	83.1 %	82.3 %	84.2 %	82.0 %	81.4 %	84.1 %	87.7 %
Other Total	71.0 %	73.7 %	73.2 %	78.4 %	80.1 %	82.0 %	81.3 %	78.5 %	79.7 %	84.6 %	83.9 %	87.3 %	84.4 %
Grand Total	67.8 %	71.6 %	69.6 %	75.4 %	77.4 %	79.6 %	79.6 %	76.9 %	77.6 %	83.4 %	83.3 %	86.0 %	83.7 %

**Cohort Enrollment**

Row Labels	Fall 1999	Fall 2000	Fall 2001	Fall 2002	Fall 2003	Fall 2004	Fall 2005	Fall 2006	Fall 2007	Fall 2008	Fall 2009	Fall 2010	Fall 2011	Fall 2012	Fall 2013
Native American	12	16	13	21	19	35	25	24	27	12	11	7	6	13	15
African American	62	52	60	66	80	72	117	106	99	73	73	71	43	97	89
Hispanic, Latino	355	335	396	450	457	559	630	609	697	507	531	556	487	935	943
Asian	113	80	108	134	150	158	187	177	210	163	108	120	103	203	198
Pacific Islander, Native H	9	9	11	13	17	24	20	20	27	28	13	10	6	9	4
Filipino	72	78	71	102	125	137	120	136	158	137	110	80	78	128	137
Multiple Ethnicities											78	80	91	133	175
Total	623	570	659	786	848	985	1099	1072	1218	920	924	924	814	1518	1561
Other															
White	902	824	962	971	1076	1059	1227	1281	1417	1171	753	669	600	1134	1036
Other, Not Stated	289	260	313	344	278	290	343	329	340	283	192	155	134	169	207
International	73	85	111	108	97	148	118	113	152	161	161	126	146	130	154
Other Total	1264	1169	1386	1423	1451	1497	1688	1723	1909	1615	1106	950	880	1433	1397
Grand Total	1887	1739	2045	2209	2299	2482	2787	2795	3127	2535	2030	1874	1694	2951	2958

# New Upper Division FULL-TIME Transfer Four-Year Graduation Rates By Pell-eligible Status *San Diego Campus*



	Fall 1999	Fall 2000	Fall 2001	Fall 2002	Fall 2003	Fall 2004	Fall 2005	Fall 2006	Fall 2007	Fall 2008	Fall 2009	Fall 2010	Fall 2011
<span style="color: orange;">■</span> Pell-Eligible	59.6 %	66.9 %	62.9 %	72.4 %	72.0 %	77.7 %	75.8 %	74.0 %	71.8 %	80.2 %	83.0 %	83.1 %	81.8 %
<span style="color: teal;">●</span> Not Pell-Eligible	71.6 %	73.7 %	72.9 %	76.8 %	80.0 %	80.5 %	81.5 %	78.0 %	79.8 %	84.7 %	83.6 %	88.8 %	85.3 %



## New Upper Division FULL-TIME Transfer Four-Year Graduation Rates By Ethnicity-Students of Color *San Diego Campus*

